

Tiny House of Happiness (Guests only House Rules)

Updated January 2020

Welcome to the THOH guidebook; first off let's start with a little housekeeping.

WIFI Network is called Kindness, and the password is 2Happiness

Heaters have wall controls in the living room and bedroom on the walls facing south. Please turn the heat down if you go out. The living room one is to the right of the yellow painting, while the bedroom one is to the left of the sliding doors.

This is a shoe free house because unfortunately these floors show every little speck of dirt and are not as sturdy as I would like. Consequently, if you didn't bring any, we have **slippers** in the living room because

In the kitchen, you'll find cooking and baking cookware and coffee and tea supplies. If you use the oven, we ask that you clean it out afterwards or we will need to charge you a separate \$50.00 cleaning fee.

The house is a gentle soul so please treat it with kindness.

If you need anything, please call Mira between the hours of 8 AM to 8 PM at 503.255.0152 or Guy at 1.916.996.0792.

Options: If you'd like a Portland **tour** or a chauffeured **trip** to Powell's bookstore, this can probably be arranged for a small additional fee or free if Guy or Mira have time. Same goes with eating out or other adventures.

(If you didn't pay for the **Kidlit Creative Retreat Package**, you can also book a one hour plus **children's book critique** with Mira for an additional \$300 if time allows. Please book ahead if you can.)

And now onto the good stuff!

The [Roseway Neighborhood](#)



Just a 5 min drive, 10 minute bike ride, or 20 minute walk from many urban gems: just to mention a few, there's lovingly curated affordable imbibables at [Mom and Pop Wine Shop](#), yoga classes at [Roseway Yoga](#), caffeine overload at [Kainos Coffee](#), pastries galore at [Heim's Bakery](#). Explore the community of Asian restaurants along the stretch of Sandy Boulevard that runs through Roseway, everything from traditional Pho to PNW-Asian fusion fare is on offer.



A couple of the original buildings from early development along Sandy Boulevard are not only attractive architectural and historic sites, but they are also places to visit just for fun. The [Roseway Theater](#) opened in 1924 with a 600-seat capacity and was a central hub of activity and socializing. Some residents in Roseway still remember the early days where you could pay with just a couple coins to see a picture. In the 1950s the building underwent its first remodel but with years of steady use,

again became worn and dated. In recent year, the original art deco details of the building have been restored, and the projection and sound equipment have been up[dated to the highest current standard to make this theater a destination for movie buffs and sentimentalists alike.

On a grander scale, the gorgeously renovated [Hollywood Theater](#) is a Portland landmark with a national reputation for award-winning film programming, innovative educational programs, and providing fiscal support for local filmmakers. It runs classic and contemporary films in 70mm projection, hosts live performances and special guests, and produces innovative film series like Queer Horror, B-Movie Bingo, and Kung Fu Theater.



[Fairley's Pharmacy](#) is a reminder that pharmacies used to be fun and functional.

Constructed in 1913 at the junction of SE Sandy and Fremont, the building is triangular, coming to a narrow point at the corner.

Walking into this pharmacy is like stepping back in time. There are some activities to keep you busy while the staff fills your prescriptions. Saddle up to the soda fountain counter and enjoy a sundae, milkshake, malted, egg cream, or phosphate soda. You can also pass the time gazing at their assortment of vintage pharmacy equipment and old advertisements for things of the past like cocaine tooth drops and asthma cigarettes.



Another cool old-school spot (although it has a checkered history) is [Clyde's Prime Rib](#), founded in 1954 but is now one of the most prominent black-owned restaurants in Portland, with a busy weekend dining and dancing scene featuring the eponymous prime ribs, cocktails, live blues, R&B and jazz. Quite an about face for a location that up until the late 1940's had a shameful past as home to a popular

West Coast chain restaurant called the Coon Chicken Inn, which finally closed in 1949. Upon buying the property in 1954, the new owner bricked up the grotesque facial caricature entrance as a castle rampart. The décor remains mid-century lounge chic, with low lighting, red velvet booths, a cocktail lounge with a huge fireplace, chandeliers, and a wealth of framed oil paintings on the walls. Prime rib is carved tableside, and customers are greeted by a full suit of armor as they enter.

Another old-time holdout despite a lot of development along NE Sandy Boulevard is the neighborhood staple [Annie's Donut Shop](#), where you will find the familiar lineup of traditional options from bear claws to fritters and a baker's dozen that won't break the bank. You know this is the real deal donut shop when you walk in and all the bright yellow booths are taken by cops, the elderly, and kids.



Roseway also boasts lovely recreation areas. [Glenhaven Park](#) offers sports fields, updated playgrounds, picnic areas, and a skate park. [Wellington Park](#) has a brand new playground and soccer field plus lighted paths for walkers, joggers, and bikers. [Rose City Golf Course](#) is on the edge of the neighborhood, just to the south of Roseway.

More WOnderful Places in [The City of Portland](#)

- [Japanese Gardens](#)



- [Lan Su Chinese Garden](#)



- [Portlandia Statue](#)



- [OMSI](#)





- [Portland Aerial Tram](#)



- [International Rose Test Garden](#)



- [Moda Center](#)



- [Pittock Mansion](#)



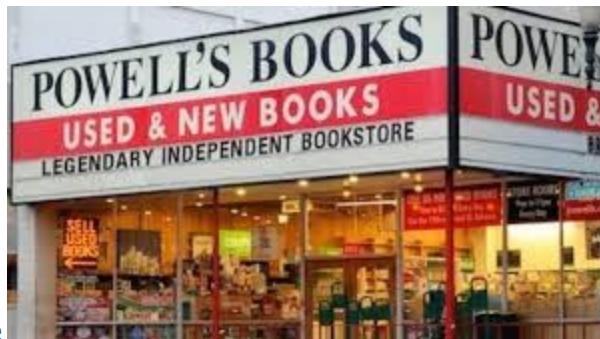
- [Washington Park](#)



- [Portland Art Museum](#)



- [Oregon Historical Museum](#)



- [Powell's Bookstore](#)

- [Peculiararium](#)



- [Saturday Market](#)



- [Portland Center Stage at the Armory](#)



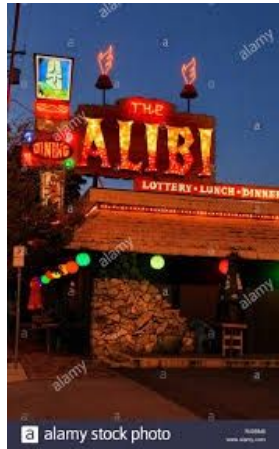
- [Arlene Schnitzer Concert Hall](#)



- [Keller Auditorium](#)



- [Alibi Tiki Lounge](#)



- [Forest Park](#)



- [Oregon Zoo](#)





- [Tom McCall Waterfront Park](#)
- Different Portland Neighborhoods

The PNW Area

- [The Oregon Coast](#)



- [Mt. Hood](#)



- [St. Helens](#)



- [Multnomah Falls](#)

- [Hood River](#)



- [Columbia Gorge](#)



- [Oregon Wine Country](#)



